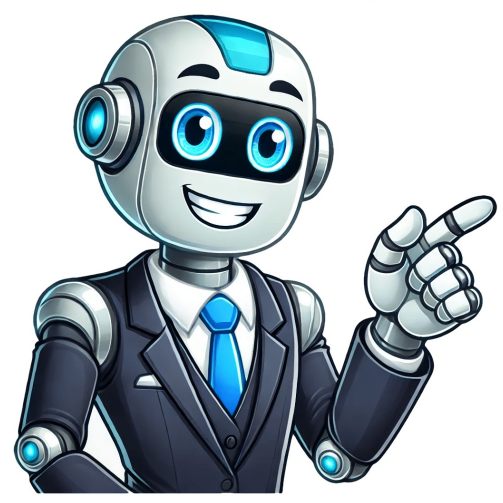


Continue

























Today's digital age, the convergence of technology has reshaped the way we consume entertainment. The integration of Internet Protocol Television (IPTV) with Android TV boxes revolutionized our TV viewing experience. With its power, you can access a vast array of content, from live TV shows to on-demand movies, sports events, and more. In this comprehensive guide, we will walk you through the process of installing and streaming IPTV on Android TV boxes, opening the doors to a new dimension of entertainment convenience, and choice. So, let's delve into this world and unlock a universe of entertainment possibilities! Installing IPTV on your Android TV box is a straightforward process. Android TV users can conveniently access the IPTV Player app through the Play Store. However, before diving into the installation, ensure you have acquired a subscription from a reliable service provider. This will be essential for accessing the diverse range of content offered by IPTV services on your Android TV Box. To immerse yourself in the world of IPTV on your Android TV Box, there are three seamless methods for installing the essential IPTV player. It's either through the Play Store or via a USB. Explore these approaches to ensure a smooth streaming experience below: 1. Begin by powering up your Android TV and navigating to the Home screen. Launch the Google Play Store. 2. At the top of the screen, tap on the search icon (magnifying glass). 3. Enter "IPTV Player" into the search bar. 4. From the search results, select the IPTV Player app by the developer "IPTV Player". 5. Tap on the "Install" button. 6. Once the installation is complete, tap on the "Open" button. 7. The IPTV Player app will launch, and you will be prompted to enter your login credentials. 8. Enter the username and password provided by your IPTV service provider. 9. Tap on the "Login" button. 10. The IPTV Player app will now display a list of available channels and content. 11. Select the channel or content you wish to watch. 12. The IPTV Player app will begin streaming the content. 13. Enjoy your IPTV viewing experience! Alternatively, you can install the IPTV Player app on your Android TV box using a USB drive. 1. Connect a USB drive to your Android TV box. 2. Copy the IPTV Player app file to the USB drive. 3. Insert the USB drive into the HDMI port on your TV. 4. Power on your Android TV and navigate to Settings. 5. Access "Device Preferences" and choose "Security & Restrictions". 7. Enable the "Unknown Sources" option. 8. Identify the USB drive section on your TV and access the APK file. 9. Adhere to the on-screen instructions to finalize the app's installation on your Android TV. 1. Before you install any APK file, make sure your Android TV Box allows installations from unknown sources. To do this, go to Settings > Device Preferences > Security & Restrictions, and enable the Unknown Sources option. 2. Open your preferred web browser on your Android TV Box and search for "GSE Smart IPTV APK download". 3. Locate a trusted source to download the APK file. 4. Once the APK file is downloaded, go to your device's File Manager or Downloads folder to locate it. 4. Click on the APK file to initiate the installation process. A confirmation screen will appear with the permissions the app requires. Click on the Install button to proceed. 5. Find and launch the GSE Smart IPTV app. 6. Enjoy IPTV content! Another method involves using ES File Explorer to install IPTV on your Android TV Box. Follow these steps: 1. Launch ES File Explorer on your Android TV. 2. Select "Downloader" from the main page. 3. Tap the "+" New icon positioned at the bottom. 4. Input the GSE Smart IPTV APK link in the address bar. 5. Tap on the "Go" button. 6. The APK file will be downloaded to your device. 7. Tap on the "Install" button. 8. The IPTV Player app will be installed on your Android TV. 9. Launch the IPTV Player app and enter your login credentials. 10. Enjoy your IPTV viewing experience! Using a USB drive to install the IPTV Player app is a straightforward process. The GSE Smart IPTV app is conveniently available through the official Google Play Store, eliminating the need for manual installations or sideloading. Here's a step-by-step guide on installing it: 1. Locate the Google Play Store app on your Android TV and open it. 2. Within the Play Store, search for the GSE Smart IPTV app using the search bar. 3. As prompted to download the GSE Smart IPTV app on your device. 4. If you're looking to extend your IPTV viewing experience beyond your handheld device, GSE Smart IPTV offers the option to cast directly to your TV screen through Chromecast. The following steps will guide you through the process: 1. Launch the GSE Smart IPTV app on your smartphone. 2. Initiate the playlist addition by tapping the "+" symbol located at the bottom of the app's homepage. 3. Choose the desired playlist from your collection. 4. Within the selected playlist, you'll encounter various categories. Select the specific category that piques your interest. 5. A list of channels associated with the chosen category will become visible. At the top of this page, you'll notice the cast icon. 6. Tap the cast icon. A menu displaying available devices for casting will appear. Proceed by selecting your Chromecast-enabled device. 7. Witness your TV screen transform into the "GSE Media Center." This signifies that your phone is now geared to stream content onto your television. 8. Opt for any TV channel of your choice. Three options will present themselves: Play, Cast, and Open. 9. Select "Cast." 10. Now, your selected video will initiate playback on your television screen. IPTV apps not functioning as expected on your Android TV can be due to various factors. Here are the common reasons for such issues and the corresponding solutions: 1. Incorrect Login or M3U Playlist: Wrong login credentials or an invalid M3U playlist link can lead to disruptions. 2. Weak Internet Connection: A poor internet connection can result in buffering and low-quality streaming. 3. Outdated IPTV App: Ensure you have the latest version of the IPTV app installed. 4. Device Compatibility: Verify if the IPTV app is compatible with your Android TV model. 5. Firewall or Security Settings: Check if any firewall or security settings are blocking the IPTV app's access to the internet. 6. DNS Settings: Verify if the DNS settings are correctly configured. 7. Network Bandwidth: Ensure you have a stable and sufficient network bandwidth. 8. Device Restart: Restart your Android TV and the IPTV app. 9. Factory Reset: As a last resort, a factory reset might be necessary. 10. Contact Support: Reach out to the IPTV service provider's support team for assistance. To ensure a smooth IPTV viewing experience, it's crucial to have a stable and sufficient network bandwidth. A high-speed internet connection is essential for uninterrupted streaming. IPTV Subscription: Choose a reputable IPTV service provider and obtain the necessary subscription details, including the server URL, username, and password. Selecting an IPTV Application: Choosing the right IPTV app is crucial for optimal performance. Installing the IPTV Application: Access the Google Play Store: Navigate to the Google Play Store on your Android TV box. Search for the Chosen App: Use the search function to find your selected IPTV application. Install the App: Click on the 'Install' button and wait for the application to download and install. Configuring the IPTV App: Open the Application: Launch the installed IPTV app. Enter Subscription Details: Input the server URL, username, and password provided by your IPTV service provider. Test the Connection: Verify if the IPTV app can successfully connect to the server and stream content. Troubleshooting: If you encounter any issues, refer to the troubleshooting section. Enjoy Your IPTV Experience: Once everything is set up, you can start watching your favorite TV shows and movies. Remember to keep your IPTV app and device updated for the best performance. The integration of IPTV with Android TV boxes has opened up a world of entertainment possibilities. With a stable internet connection and a reliable IPTV service provider, you can enjoy a seamless streaming experience on your Android TV. This guide will walk you through the process of setting up IPTV on your device, ensuring a seamless and enjoyable viewing experience. Prerequisites for IPTV Streaming: Before diving into the setup process, ensure you have the following: Stable Internet Connection: A high-speed internet connection is essential for uninterrupted streaming. IPTV Subscription: Choose a reputable IPTV service provider and obtain the necessary subscription details, including the server URL, username, and password. Selecting an IPTV Application: Choosing the right IPTV app is crucial for optimal performance. Installing the IPTV Application: Access the Google Play Store: Navigate to the Google Play Store on your Android TV box. Search for the Chosen App: Use the search function to find your selected IPTV application. Install the App: Click on the 'Install' button and wait for the application to download and install. Configuring the IPTV App: Open the Application: Launch the installed IPTV app. Enter Subscription Details: Input the server URL, username, and password provided by your IPTV service provider. Test the Connection: Verify if the IPTV app can successfully connect to the server and stream content. Troubleshooting: If you encounter any issues, refer to the troubleshooting section. Enjoy Your IPTV Experience: Once everything is set up, you can start watching your favorite TV shows and movies. Remember to keep your IPTV app and device updated for the best performance. The integration of IPTV with Android TV boxes has opened up a world of entertainment possibilities. With a stable internet connection and a reliable IPTV service provider, you can enjoy a seamless streaming experience on your Android TV. This guide will walk you through the process of setting up IPTV on your device, ensuring a seamless and enjoyable viewing experience. Prerequisites for IPTV Streaming: Before diving into the setup process, ensure you have the following: Stable Internet Connection: A high-speed internet connection is essential for uninterrupted streaming. IPTV Subscription: Choose a reputable IPTV service provider and obtain the necessary subscription details, including the server URL, username, and password. Selecting an IPTV Application: Choosing the right IPTV app is crucial for optimal performance. Installing the IPTV Application: Access the Google Play Store: Navigate to the Google Play Store on your Android TV box. Search for the Chosen App: Use the search function to find your selected IPTV application. Install the App: Click on the 'Install' button and wait for the application to download and install. Configuring the IPTV App: Open the Application: Launch the installed IPTV app. Enter Subscription Details: Input the server URL, username, and password provided by your IPTV service provider. Test the Connection: Verify if the IPTV app can successfully connect to the server and stream content. Troubleshooting: If you encounter any issues, refer to the troubleshooting section. Enjoy Your IPTV Experience: Once everything is set up, you can start watching your favorite TV shows and movies. Remember to keep your IPTV app and device updated for the best performance. The integration of IPTV with Android TV boxes has opened up a world of entertainment possibilities. With a stable internet connection and a reliable IPTV service provider, you can enjoy a seamless streaming experience on your Android TV. This guide will walk you through the process of setting up IPTV on your device, ensuring a seamless and enjoyable viewing experience. Prerequisites for IPTV Streaming: Before diving into the setup process, ensure you have the following: Stable Internet Connection: A high-speed internet connection is essential for uninterrupted streaming. IPTV Subscription: Choose a reputable IPTV service provider and obtain the necessary subscription details, including the server URL, username, and password. Selecting an IPTV Application: Choosing the right IPTV app is crucial for optimal performance. Installing the IPTV Application: Access the Google Play Store: Navigate to the Google Play Store on your Android TV box. Search for the Chosen App: Use the search function to find your selected IPTV application. Install the App: Click on the 'Install' button and wait for the application to download and install. Configuring the IPTV App: Open the Application: Launch the installed IPTV app. Enter Subscription Details: Input the server URL, username, and password provided by your IPTV service provider. Test the Connection: Verify if the IPTV app can successfully connect to the server and stream content. Troubleshooting: If you encounter any issues, refer to the troubleshooting section. Enjoy Your IPTV Experience: Once everything is set up, you can start watching your favorite TV shows and movies. Remember to keep your IPTV app and device updated for the best performance. The integration of IPTV with Android TV boxes has opened up a world of entertainment possibilities. With a stable internet connection and a reliable IPTV service provider, you can enjoy a seamless streaming experience on your Android TV. This guide will walk you through the process of setting up IPTV on your device, ensuring a seamless and enjoyable viewing experience. Prerequisites for IPTV Streaming: Before diving into the setup process, ensure you have the following: Stable Internet Connection: A high-speed internet connection is essential for uninterrupted streaming. IPTV Subscription: Choose a reputable IPTV service provider and obtain the necessary subscription details, including the server URL, username, and password. Selecting an IPTV Application: Choosing the right IPTV app is crucial for optimal performance. Installing the IPTV Application: Access the Google Play Store: Navigate to the Google Play Store on your Android TV box. Search for the Chosen App: Use the search function to find your selected IPTV application. Install the App: Click on the 'Install' button and wait for the application to download and install. Configuring the IPTV App: Open the Application: Launch the installed IPTV app. Enter Subscription Details: Input the server URL, username, and password provided by your IPTV service provider. Test the Connection: Verify if the IPTV app can successfully connect to the server and stream content. Troubleshooting: If you encounter any issues, refer to the troubleshooting section. Enjoy Your IPTV Experience: Once everything is set up, you can start watching your favorite TV shows and movies. Remember to keep your IPTV app and device updated for the best performance. The integration of IPTV with Android TV boxes has opened up a world of entertainment possibilities. With a stable internet connection and a reliable IPTV service provider, you can enjoy a seamless streaming experience on your Android TV. This guide will walk you through the process of setting up IPTV on your device, ensuring a seamless and enjoyable viewing experience. Prerequisites for IPTV Streaming: Before diving into the setup process, ensure you have the following: Stable Internet Connection: A high-speed internet connection is essential for uninterrupted streaming. IPTV Subscription: Choose a reputable IPTV service provider and obtain the necessary subscription details, including the server URL, username, and password. Selecting an IPTV Application: Choosing the right IPTV app is crucial for optimal performance. Installing the IPTV Application: Access the Google Play Store: Navigate to the Google Play Store on your Android TV box. Search for the Chosen App: Use the search function to find your selected IPTV application. Install the App: Click on the 'Install' button and wait for the application to download and install. Configuring the IPTV App: Open the Application: Launch the installed IPTV app. Enter Subscription Details: Input the server URL, username, and password provided by your IPTV service provider. Test the Connection: Verify if the IPTV app can successfully connect to the server and stream content. Troubleshooting: If you encounter any issues, refer to the troubleshooting section. Enjoy Your IPTV Experience: Once everything is set up, you can start watching your favorite TV shows and movies. Remember to keep your IPTV app and device updated for the best performance. The integration of IPTV with Android TV boxes has opened up a world of entertainment possibilities. With a stable internet connection and a reliable IPTV service provider, you can enjoy a seamless streaming experience on your Android TV. This guide will walk you through the process of setting up IPTV on your device, ensuring a seamless and enjoyable viewing experience. Prerequisites for IPTV Streaming: Before diving into the setup process, ensure you have the following: Stable Internet Connection: A high-speed internet connection is essential for uninterrupted streaming. IPTV Subscription: Choose a reputable IPTV service provider and obtain the necessary subscription details, including the server URL, username, and password. Selecting an IPTV Application: Choosing the right IPTV app is crucial for optimal performance. Installing the IPTV Application: Access the Google Play Store: Navigate to the Google Play Store on your Android TV box. Search for the Chosen App: Use the search function to find your selected IPTV application. Install the App: Click on the 'Install' button and wait for the application to download and install. Configuring the IPTV App: Open the Application: Launch the installed IPTV app. Enter Subscription Details: Input the server URL, username, and password provided by your IPTV service provider. Test the Connection: Verify if the IPTV app can successfully connect to the server and stream content. Troubleshooting: If you encounter any issues, refer to the troubleshooting section. Enjoy Your IPTV Experience: Once everything is set up, you can start watching your favorite TV shows and movies. Remember to keep your IPTV app and device updated for the best performance. The integration of IPTV with Android TV boxes has opened up a world of entertainment possibilities. With a stable internet connection and a reliable IPTV service provider, you can enjoy a seamless streaming experience on your Android TV. This guide will walk you through the process of setting up IPTV on your device, ensuring a seamless and enjoyable viewing experience. Prerequisites for IPTV Streaming: Before diving into the setup process, ensure you have the following: Stable Internet Connection: A high-speed internet connection is essential for uninterrupted streaming. IPTV Subscription: Choose a reputable IPTV service provider and obtain the necessary subscription details, including the server URL, username, and password. Selecting an IPTV Application: Choosing the right IPTV app is crucial for optimal performance. Installing the IPTV Application: Access the Google Play Store: Navigate to the Google Play Store on your Android TV box. Search for the Chosen App: Use the search function to find your selected IPTV application. Install the App: Click on the 'Install' button and wait for the application to download and install. Configuring the IPTV App: Open the Application: Launch the installed IPTV app. Enter Subscription Details: Input the server URL, username, and password provided by your IPTV service provider. Test the Connection: Verify if the IPTV app can successfully connect to the server and stream content. Troubleshooting: If you encounter any issues, refer to the troubleshooting section. Enjoy Your IPTV Experience: Once everything is set up, you can start watching your favorite TV shows and movies. Remember to keep your IPTV app and device updated for the best performance. The integration of IPTV with Android TV boxes has opened up a world of entertainment possibilities. With a stable internet connection

URL, username, and password provided by your IPTV service provider. Save and Refresh: Save the settings and refresh the app to load the available channels. Optimizing Your IPTV Experience Stable Internet Connection: Ensure a consistent and high-speed internet connection to prevent buffering. Regular Updates: Keep both your IPTV app and Android TV box firmware updated to access the latest features and security patches. Use Wired Connection: For enhanced stability, consider using an Ethernet connection instead of Wi-Fi. Troubleshooting Common Issues Buffering: If you experience buffering, check your internet speed and consider reducing the streaming quality. App Crashes: Ensure the app is updated to the latest version. If issues persist, reinstall the app. Channel Loading Errors: Verify that your subscription details are correctly entered and that your IPTV service provider is operational. By following these steps, you can set up IPTV on your Android TV box and enjoy a wide range of channels and on-demand content. Remember to choose a reliable IPTV service provider and maintain a stable internet connection for the best experience.