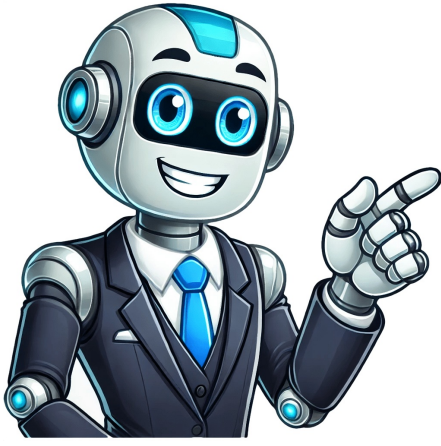


[Click Here](#)

































1640s, "an error in computing time or finding dates," from Latin anachronismos, from Greek anachronismos, from anakhronizō "refer to wrong time," from ana "against" (see ana-) + khronos "time" (see chrono-). The meaning "something out of harmony with a specified time" is recorded by 1816.early 15c., -cronik, of diseases, "lasting a long time," from Old French chronique and directly from Latin chronicus, from Greek khronikos "of time, concerning time," from khronos "time" (see chrono-). Vague disapproving sense (from 17c.) is from association with diseases and later addictions. Literal sense "pertaining to time" is rare in English. As a popular slang catch-all word for "cannabis," popularized from 1992 by "The Chronic," an album released by rapper Dr. Dre; said to be because it described especially potent marijuana, on the notion of "extreme, severe." Related: Chronical; chronically.Advertisement1560s, "wild, unruly" (originally in reference to hawks), from French haggard, said in Watkins to be from Old French falcon hahard "wild falcon," literally "falcon of the woods," from hahard, hahart, from Middle High German hag "hedge, copse, wood," from Proto-Germanic \*hagon, fl1670s, from French hygiene, ultimately from Greek hygieine techne "the healthful art," from hygies "healthy, sound, hearty," literally "living well" (personified as the goddess Hygieia), from PIE \*eyu-gw-ie-es- "having a vigorous life," from root \*aiw-, \*ayu- "vital force, life, learily 15c., "to include," from Old French compris, part participle of comprendre "to contain, comprise" (12c.), from Latin comprehendere "to take together, to unite; include; seize; to comprehend, perceive" (to seize or take in the mind), from com "with, together," here probably RootWords.io Copyright RootWords, Inc. 2022-2025National Science Foundation America's Seed Fund program grant recipient. (Chron: Samay aur Sanskriti ka Mool -  
: Discover the fascinating world of the root "chron," meaning time. From chronic conditions to synchronized movements, this Greek root has shaped countless words and concepts across disciplines, connecting us to the essence of time itself. Table of Contents Introduction: The Significance of "Chron" ("Chron" ka Mahatva - "" ) Kya common hai ek chronic illness, synchronized dance, aur timeline mein? Yeh sabhi "chron" root se jude hain, jo Greek shabd khronos () se aaya hai. Iska uchcharan "kron" hai, aur yeh ek linguistic foundation provide karta hai un shabdon ke liye jo history, science, aur daily life mein use hote hain. Chahe baat ho perpetual conditions ki ya harmonious timing ki, "chron" humein yaad dilata hai ki samay (time) ka human experience par kitna gahra prabhav hai. Etymology and Historical Journey ("Chron" ki Upatti aur Ithaas - "" ) "Chron" root Greek shabd khronos se aya, jiska arth hai "" (time). Ancient Greeks samay ko prabhav se fascinate the aur is root ka use mythology, philosophy, aur science mein kiya gaya. Yeh root pehle Latin, phir Old French ke zariye English mein enter hua aur apni temporal essence ke saath, "chronic" aur "chronicle" jaise shabdon ka hissa ban gaya. Iska safar dikhata hai ki humanity ne hamesha samay ko measure aur samajhne ki koshish ki hai. Mnemonic: Unlocking the Power of "Chron" (Mnemonic ke Zariye "Chron" ko Yaad Rakhein - " "" ) Ek ticking clock imagine kariye jo label ki gayi hai "CHRON" ke saath, har second ko mark karte hue ek timeline ke upar, jo past se future tak stretch ho rahi hai. Yeh visualization "chron" ko samay ke concept se directly jodta hai. Mnemonic Device: Chron keeps track of timefrom chronic problems to synchronized dances. ("Chron" hamesha samay ka lekar modern chronometers tak, yeh root dikhata hai ki hum samay ko track aur master karne mein kitna interested hain. "Chronicle" (long-lasting) aur "synchronize" (time mein align karna). A: Chronicle ek (kron-ik): Persistent aur long-lasting cheez. Example: "Uski chronic back pain ko ongoing treatment ki zarurat thi." Synchronize (sin-kruh-nize): Actions ko time mein align karna. Example: "Swimmers ne apni movements perfectly synchronize ki during routine." Chronicle (kron-i-kuhl): Ek historical account jo time order mein events ko describe kare. Example: "Yeh kitab ek purani empire ke uthan aur girawat ko chronicle karti hai." Chronology (kruh-nol-uh-jee): Events ka arrangement time order mein. Example: "Historian ne carefully war ki chronology construct ki." Anachronism (uh-nak-ruh-niz-uhm): Kuch aisi cheez jo apne proper time period mein na ho. Example: "Film mein smartphone ka use ek glaring anachronism tha." "Chron" Through Time (Samay ke Saath "Chron" ka Safar - "" ) Chronic (Ancient Use): Medical texts mein use hota tha to describe long-lasting conditions. Shift: Social aur personal issues ke liye bhi expand ho gaya hai. Anachronism (Renaissance): Pehle historical works ki galtoon ko describe karne ke liye use hota tha, ab yeh ek literary device ban gaya hai jo contrasting eras ko highlight karta hai. "Chron" in Specialized Fields (Vishesh Kshetron Mein "Chron" ka Prayog - "" ) Medicine (Chikitsa): Chronic: Aise diseases jo long-term care ki zarurat hoti hai. Technology (Takneek): Synchronized Systems: Communication networks aur digital devices ke liye zaruri. Example: "Servers synchronize karte hain time ko taaki data transfers accurate ho." History (Ithaas): Chronicles: Detailed historical accounts ke liye use hota hai. Example: "Froissart jaise chronicles medieval life ke baare mein insights dete hain." Illustrative Story: "Chron" in Action ("Chron" ke Prayog ki Kahani - "" ) Ek bustling city mein, historian Mia ko ek purana chronicle mila jo uske ancestors ki zindagi ke baare mein tha. Uske tech-savvy bhai ne family tree app ko synchronize kiya aur naye details add kiye. In dono ka kaam centuries ko bridge karta hai, dikhata hai ki "chron" kaise past ko present se jodta hai ek thread ke zariye jo kabhi toot nahi sakta. Cultural Significance of "Chron" ("Chron" ka Sanskriti Mahatva - "" ) "Chron" human culture mein deeply embedded hai. Greek mythology ke Chronos se lekar modern chronometers tak, yeh root dikhata hai ki hum samay ko track aur master karne mein kitna interested hain. "Chronicle" (long-lasting) aur "synchronize" (time mein align karna). A: Chronicle ek detailed account hai jo events ko unke hone ke order mein describe karta hai. Historians aur writers iska use significant happenings ko document karne ke liye karte hain, taki history preserve ho sake. A: Synchronize ka matlab hai actions ya events ko samay mein align karna. Yeh kaafi contexts mein use hota hai, jaise clocks ko same time par set karna, dance movements ko coordinate karna, ya technology mein devices ko ek saath kaam karna ensure karna. A: Chronic ka matlab hai kuch aisa jo lambe samay tak chalta ho, aksar negative connotation ke saath. Medicine mein, yeh long-lasting conditions ko describe karta hai jaise chronic pain. Broader contexts mein, yeh recurring problems, jaise chronic habit of being late, ko bhi represent karta hai. A: Anachronism ka matlab hai koi cheez jo galat time period mein appear kare. For example, ek modern gadget ka depiction ek medieval movie mein ek glaring anachronism hoga. A: Technology mein, "chron" ka importance systems ki synchronization mein hota hai. Devices, servers, aur online meetings synchronized clocks par depend karte hain taaki woh sahi tarique se kaam kar sakein. A: "Chron" ka link words jaise "chronology" (events ki time order mein arrangement) aur "chronicling" (historical accounts ko document karna) se hai, jo dikhata hai iska historical events ko organize aur samajhne mein importance. A: Chronometer ek highly accurate timekeeping instrument hai jo navigation aur horology mein use hota hai. Iska purpose precise time intervals measure karna hai, jo celestial navigation ya scientific experiments ke liye zaruri hai. Test Your Knowledge:Chron Mastery Quiz (Chron Quiz ke Zariye Apne Gyaan ko Test Karein - Chron ) Correct answer: Time. Root "chron" Greek shabd khronos se aaya hai, jiska arth hai "samay" (time). Correct answer: Synchronize. Synchronize ka matlab hai events ko coordinate karna taaki woh ek samay par ho. Correct answer: Persistent. Chronic condition woh hoti hai jo lambe samay tak chalti hai. Correct answer: Out-of-time placement. Anachronism ka matlab hai koi cheez jo apne correct time period mein na ho. Correct answer: Chronometer. Chronometer ek precise timekeeping device hai jo navigation aur scientific experiments jaise tasks mein use hoti hai. Conclusion: The Everlasting Influence of "Chron" ("Chron" ka Amar Prabhav - "" ) "Chron" root humein language aur culture mein samay ke prabhav ko samajhne ka ek tareeka deta hai. Medicine, history, aur technology jaise fields ko explore karte hue, yeh root humein dikhata hai ki kaise humari zindagi samay se judi hai. Chahe baat chronicling history ki ho ya synchronized systems ki, "chron" hamesha humein samay ke flow mein anchor karta hai. In the vast tapestry of language, every word carries a story, a thread woven into the fabric of human communication. Among these linguistic gems lies the root word chron, a term that has permeated various disciplines and left an indelible mark on our lexicon.If you're short on time, here's a quick answer to your question: The root word chron is derived from the Greek word khronos, meaning time. It is commonly found in words related to time, sequence, or chronology. In this comprehensive article, we will delve into the fascinating world of etymology, tracing the origins and evolution of the root word chron. We will explore its diverse applications across various fields, from science and medicine to history and literature. Prepare to embark on a journey through time, uncovering the rich tapestry of meaning woven into this ancient linguistic thread.The Greek Origins of ChronThe root word chron has its origins deeply rooted in the ancient Greek language and mythology. It is a linguistic gem that has woven itself into the fabric of various languages, carrying with it a profound connection to the concept of time.Derived from the Greek word khronos, this root has given birth to a plethora of words that permeate our modern lexicon, shaping our understanding of temporal concepts and the ever-flowing nature of existence.Chronos: The Personification of TimeIn Greek mythology, Chronos was the primordial deity who personified time itself. He was depicted as an aged, bearded figure wielding a sickle, a symbolic representation of the relentless passage of time and its ability to reap all that exists.This mythological figure serves as a vivid embodiment of the profound reverence the ancient Greeks held for the concept of time and its inescapable influence on the mortal realm. According to Britannica, Chronos was regarded as the personification of time in pre-Socratic philosophy and later literature.The Influence of Greek MythologyThe influence of Greek mythology on language and culture cannot be overstated. The tales and legends woven by the ancient Greeks have left an indelible mark on our understanding of the world and the way we express ourselves.The root chron serves as a testament to this enduring impact, as it has given rise to a plethora of words that encompass various aspects of time, such as chronology, chronicle, chronometer, and anachronism. These words have become integral parts of our lexicon, enabling us to articulate complex temporal concepts with precision and clarity.Linguistic Roots and Branching MeaningsAs the root chron has traversed through various linguistic landscapes, it has branched out into a multitude of meanings and applications. For instance, the word chronicle derives from the Greek khronikos, meaning of time or lasting a long time. This term has found its way into the medical field, describing conditions that persist over an extended period. Similarly, the word chronicle stems from the Greek khronika, signifying a historical record or narrative of events arranged in chronological order. These diverse applications showcase the versatility and adaptability of the root chron across various domains. In the ever-evolving landscape of language, the root chron stands as a testament to the enduring influence of ancient Greek culture and the timeless fascination with the concept of time itself. Its presence in our modern lexicon serves as a linguistic bridge, connecting us to the rich tapestry of Greek mythology and the profound insights of ancient philosophers.As we continue to explore the depths of language and its origins, the root chron will undoubtedly remain a cherished linguistic gem, reminding us of the intricate tapestry that weaves together our past, present, and future. Chronology: Mapping the Passage of TimeChronology, derived from the root word chron, plays a crucial role in our understanding of the world around us. It is the study of time and its organization, allowing us to comprehend the sequence of events and their temporal relationships.Chronology serves as a fundamental tool for various disciplines, enabling us to unravel the mysteries of the past and make sense of the present. Historical Timelines and Chronological OrderIn the realm of history, chronology is indispensable. Historians meticulously construct timelines to place significant occurrences in their proper chronological order. These timelines serve as visual representations of the progression of events, helping us grasp the causal relationships and interconnections between different historical periods.By arranging events in a chronological sequence, we can better comprehend the evolution of civilizations, the rise and fall of empires, and the impact of pivotal moments on the course of human history. Organizations like World History Encyclopedia provide comprehensive chronological timelines that shed light on the intricate tapestry of global events.Chronological Dating in Archaeology and PaleontologyIn the fields of archaeology and paleontology, chronology plays a vital role in establishing the age and sequence of artifacts, fossils, and geological formations. Techniques such as radiocarbon dating, potassium-argon dating, and dendrochronology (tree-ring dating) have revolutionized our ability to determine the chronological age of ancient remains.By assigning precise dates to these findings, archaeologists and paleontologists can reconstruct the timeline of human and biological evolution, shedding light on the origins and development of various species and cultures. The Archaeological Institute of America is a leading authority on chronological dating methods and their applications in these disciplines.Chronological Narratives in LiteratureLiterature often employs chronological narratives to weave captivating tales that resonate with readers. Authors skillfully manipulate the flow of time, presenting events in a specific chronological order to build suspense, evoke emotions, or convey profound messages.Chronological storytelling allows readers to immerse themselves in the unfolding of events, experiencing the journey alongside the characters. From classic novels like To Kill a Mockingbird by Harper Lee to contemporary masterpieces like The Kite Runner by Khaled Hosseini, chronological narratives have the power to transport us through time and space, leaving an indelible mark on our literary experiences. Whether exploring historical timelines, deciphering the ages of ancient artifacts, or delving into literary masterpieces, chronology serves as a fundamental tool for understanding the world around us.It allows us to organize and comprehend the intricate tapestry of events, unraveling the mysteries of the past and shaping our perception of the present. As we continue to explore the depths of human knowledge, chronology will remain an indispensable companion, guiding us through the intricate maze of time and its ever-unfolding narratives.Chrono- In Scientific TerminologyThe root word chron has found its way into various scientific disciplines, where it serves as a prefix denoting time or duration. This linguistic connection underscores the importance of temporal aspects in understanding the natural world. Whether its exploring biological rhythms, optimizing drug delivery, or unraveling Earth's geological history, the study of time-related phenomena continues to yield valuable insights and shape our scientific knowledge.Chrono- in Medical TerminologyThe prefix chrono- is derived from the Greek word khronos, which means time. In the realm of medicine, this root word plays a crucial role in understanding various concepts and conditions related to time and duration. Let's delve into some key areas where chrono- makes its presence felt.Chronic Conditions: Persistent and Long-lastingOne of the most common applications of chrono- is in the term chronic, which refers to diseases or conditions that persist over an extended period. According to the Centers for Disease Control and Prevention (CDC), chronic diseases are the leading cause of death and disability in the United States, accounting for 7 out of 10 deaths each year.Examples of chronic conditions include diabetes, heart disease, asthma, and arthritis. These conditions require ongoing management and treatment, as they don't simply resolve on their own.Chronotherapy: Timing Treatments for Optimal EfficacyChronotherapy, also known as chronotherapeutics, is an emerging field that focuses on the timing of medication administration to maximize therapeutic effects and minimize side effects. This approach recognizes that our bodies have natural circadian rhythms, and the timing of drug delivery can significantly impact its efficacy and tolerability.For instance, studies have shown that taking certain blood pressure medications at bedtime can be more effective in controlling hypertension than taking them in the morning. The Chronotherapy Alliance is a non-profit organization dedicated to advancing research and education in this area.Chronopharmacogenetics: Personalized Medication TimingChronopharmacogenetics is a specialized field that combines chronotherapy with pharmacogenetics, which studies how an individual's genetic makeup influences their response to medications. This approach recognizes that individuals may have different optimal timing for medication administration based on their genetic profile.By understanding these genetic variations, healthcare providers can tailor treatments to each patient's unique chronopharmacogenetic profile, ensuring the most effective and personalized care.Chrono- in Environmental ScienceThe prefix chrono- is also used in environmental science to describe rhythms and cycles related to time. For example, circadian rhythms refer to the 24-hour cycle of physiological processes in living organisms, while seasonal cycles refer to the changes in Earth's climate and ecosystems over the course of a year.Chrono- in Space ExplorationAs we venture further into space exploration, the concept of time becomes increasingly important. Chrono- is used to describe the timing of space missions, the duration of space travel, and the effects of long-term spaceflight on the human body.Chrono- in Everyday LanguageFinally, the prefix chrono- is also found in many everyday words, often related to time, duration, or sequence. Words like chronicle, chronology, and chronicle are familiar to most of us, illustrating the pervasive influence of the root word chron in our lives. You may have encountered the Greek god Chronos during your mythology studies, who was the god of time. He is the origin of our depiction of Father Time, and was often pictured with wings since time tends to fly by. The Chronicles of Narnia by C.S. Lewis is a very popular series that you've probably read or watched. A chronicle is a record of historical events that happen over time. Chronicles are kept in chronological order, that is, arranging events in the correct time sequence in which they occurred. Ever watched a film in which there was something out of place, like a watch on the wrist of a Roman soldier, or a car speeding down a street during the Middle Ages? Those are both examples of anachronisms, or things that are placed in the wrong time period.For your computer buffs, there's a widely used Linux and Mac (UNIX) utility called cron; it manages how programs run, using a special syntax for specifying time. People with acute symptoms of disease suffer for only a short time, but those with chronic ailments suffer over an extended period of time. Hopefully neither you nor any of your cronies, or friends whom you have known for a long time, are so afflicted!Well, to keep in sync, or synchronized with the time restraints for this podcast and blog, I'll leave you in a timely fashion, lest Chronos swing his sickle and cut off my time for me! chronograph: writer of time chronometer: instrument that measures time synchronized: happens at the same time chronicle: events in time chronological: time sequence anachronism: wrong time chronic: pertaining to time crony: friend over timeDiscover the fascinating world of the root "chron," meaning time. From chronic conditions to synchronized movements, this Greek root has shaped countless words and concepts across disciplines, connecting us to the essence of time itself.Table of Contents1. Introduction: The Significance of "Chron"What connects a chronic illness, a synchronized dance, and a timeline? The answer lies in the root "chron," derived from the Greek word khronos (time). Pronounced "kron," this root provides a linguistic foundation for terms spanning history, science, and everyday life. Whether marking perpetual conditions or harmonious timing, "chron" reminds us of time's profound influence on human experience.2. Etymology and Historical JourneyThe root "chron" originates from the Greek khronos, meaning time. Ancient Greeks, fascinated by the passage of time, used this term in mythology, philosophy, and science. Over centuries, "chron" entered Latin, then Old French, and finally English, carrying its temporal essence into words like "chronic" and "chronicle." Its journey reflects humanity's enduring obsession with measuring and understanding time.3. Mnemonic: Unlocking the Power of "Chron"Imagine a ticking clock labeled "CHRON," marking every second of a timeline stretching into the past and future. This visualization ties "chron" to the concept of time.Mnemonic Device: Chron keeps track of timefrom chronic problems to synchronized dances.4. Common "Chron"-Related TermsChronic (kron-ik): Persistent, long-lasting.Example: "Her chronic back pain required ongoing treatment."Synchronize (sin-kruh-nize): To align events or actions in time.Example: "The swimmers synchronized their movements perfectly during the routine."Chronicle (kron-i-kuhl): A historical account of events in time order.Example: "The book chronicles the rise and fall of the ancient empire."Chronology (kruh-nol-uh-jee): The arrangement of events in time order.Example: "The historian carefully constructed the chronology of the war."Anachronism (uh-nak-ruh-niz-uhm): Something out of its proper time period.Example: "The film's use of a smartphone in a medieval setting was a glaring anachronism."5. "Chron" Through TimeChronic (Ancient): Refers to diseases or conditions persisting over time.Example: Chronic illnesses like diabetes require long-term care.Technology:Synchronized Systems: Essential for communication networks and digital devices.Example: Servers synchronize time to ensure accurate data transfers.History:Chronicles: Provide detailed accounts of historical events.Example: Chronicles like those of Froissart offer insights into medieval life.7. Illustrative Story: "Chron" in ActionIn a bustling city, Mia, a historian, uncovered an old chronicle detailing her ancestors' lives. Meanwhile, her tech-savvy brother synchronized their family tree app to add the newfound details. Their work bridged centuries, showing how "chron" connects the past to the present through time's unyielding thread.8. Cultural Significance of "Chron""Chron" is deeply embedded in human culture. From Chronos, the Greek personification of time, to modern devices like chronometers, this root reflects our fascination with tracking and mastering time. Phrases like "chronicle history" and "perfect synchronization" highlight its enduring impact.9. The "Chron" Family TreeTemp (Latin: Time):Temporary: Lasting a short time.Temporal: Related to worldly time.Meter (Greek: Measure):Chronometer: A precise timekeeping device.Dur (Latin: Hard, enduring):Duration: The length of time something lasts.10. FAQs About the "Chron" Word RootA: "Chron" means "time," derived from the Greek root khronos. It forms the foundation of many English words related to time, such as "chronic" (lasting over time) and "synchronize" (aligning actions in time).A: A chronicle is a detailed account of events arranged in the order they occurred. Historians and writers use chronicles to document significant happenings across timelines, preserving history for future generations.A: Synchronize means to align actions or events in time. Its used in various contexts, such as setting clocks to the same time, coordinating dance movements, or ensuring devices communicate simultaneously in technology.A: "Chronic" refers to something that persists for a long time, often with a negative connotation. In medicine, it describes long-lasting conditions like chronic pain. In broader contexts, it can refer to recurring problems, such as a chronic habit of being late.A: An anachronism is something misplaced in time, often appearing in the wrong era. For instance, depicting a modern gadget in a movie set in the Middle Ages is an example of an anachronism.A: In technology, "chron" is essential for maintaining synchronization in systems. Devices, servers, and even online meetings rely on synchronized clocks to function correctly. Concepts like chronometers ensure precision in timekeeping.A: Words like "chronology" (the sequence of events in time) and "chronicling" (documenting historical accounts) stem from the root "chron," emphasizing its importance in organizing and understanding historical events.A: A chronometer is a highly accurate timekeeping instrument. Its commonly used in navigation and horology to measure precise time intervals, crucial for tasks like celestial navigation or scientific experiments.11. Test Your Knowledge: "Chron" Mastery QuizCorrect answer: Time. The root "chron" comes from the Greek word khronos, meaning "time." Correct answer: Persistent. Chronic conditions last for a long period and often require ongoing management. Correct answer: Synchronize. It means coordinating or aligning events so they occur at the same time. Correct answer: Chronometer. It is a precision timekeeping device often used in navigation and experiments. Correct answer: Out-of-time placement. An anachronism is something out of its proper time period.12. Conclusion: The Everlasting Influence of "Chron"The root "chron" weaves through language, connecting fields like medicine, history, and technology. As we continue to explore time's mysteries, this root remains a vital link to our temporal experiences. Whether chronicling history or synchronizing systems, "chron" keeps us anchored in the flow of time. variant of chrono- before a vowel:Collins English Dictionary Complete & Unabridged 2012 Digital Edition William Collins Sons & Co. Ltd. 1979, 1986 HarperCollins Publishers 1998, 2000, 2003, 2005, 2006, 2007, 2009, 2012Chron- is a combining form used like a prefix meaning time. It appears in a few technical terms.Chron- comes from the Greek khronos, meaning time. The adjective chronic, meaning constant or habitual, also derives from this root.Chron- is a variant of chrono-, which loses its -o when combined with words or word elements beginning with vowels.Want to know more? Read our Words That Use chrono- article.The physiology term chronaxia, or chronaxy, is the minimum time that an electric current of twice the threshold strength must flow in order to excite a tissue.The chron- parts of the word means time. The second part of the word, -axie, ultimately comes from the Greek axia, meaning worth, value. Chronaxia, then, literally means time value. The word chronaxia comes from French, using an equivalent form of chron-.What are some words related to the combining form chron-?chroniclychronic shockchroniclechrononWhat are some other forms that chron- may be commonly confused with? Given what you know about the meaning of chron-, what, generally speaking, does a chronicle give a written account of?Browse#abbccddeeffghiiikkllmmnnoppqrrssttuuvvwxxyzzAboutCareersContact usCookies, terms, & privacyHelpFollow usGet the Word of the Day every day! 2025 Dictionary.com, LLC Lets take a couple of minutes of your time to talk about chron, the Greek root word for time.Ever owned a Time? Yes, you knew I was talking about watches, that is, keepers of time. Watches are technically chronographs, or writers of time. The Chrono is one of Time's all-time bestsellers, meant to keep accurate time to keep you on time. In the same vein, some watches have stopwatches or chronometers, which measure how much time has elapsed during an event.Ever watched synchronized swimmers in the Olympics? They all make their moves at the same time. Synchronous events, therefore, happen at the same time.You may have encountered the Greek god Chronos during your mythology studies, who was the god of time. He is the origin of our depiction of Father Time, and was often pictured with wings since time tends to fly by. The Chronicles of Narnia by C.S. Lewis is a very popular series that you've probably read or watched. A chronicle is a record of historical events that happen over time. Chronicles are kept in chronological order, that is, arranging events in the correct time sequence in which they occurred. Ever watched a film in which there was something out of place, like a watch on the wrist of a Roman soldier, or a car speeding down a street during the Middle Ages? Those are both examples of anachronisms, or things that are placed in the wrong time period.For your computer buffs, there's a widely used Linux and Mac (UNIX) utility called cron; it manages how programs run, using a special syntax for specifying time. People with acute symptoms of disease suffer for only a short time, but those with chronic ailments suffer over an extended period of time. Hopefully neither you nor any of your cronies, or friends whom you have known for a long time, are so afflicted!Well, to keep in sync, or synchronized with the time restraints for this podcast and blog, I'll leave you in a timely fashion, lest Chronos swing her sickle and cut off my time for me! chronograph: writer of time chronometer: instrument that measures time synchronized: happens at the same time chronicle: events in time chronological: time sequence anachronism: wrong time chronic: pertaining to time crony: friend over timeThe root word chron is chrono, originating from the Greek, meaning relating to time.

**What does chron mean in greek. Greek roots chron. What does the greek root chron mean. Greek and latin roots. Greek and latin roots for chron.**