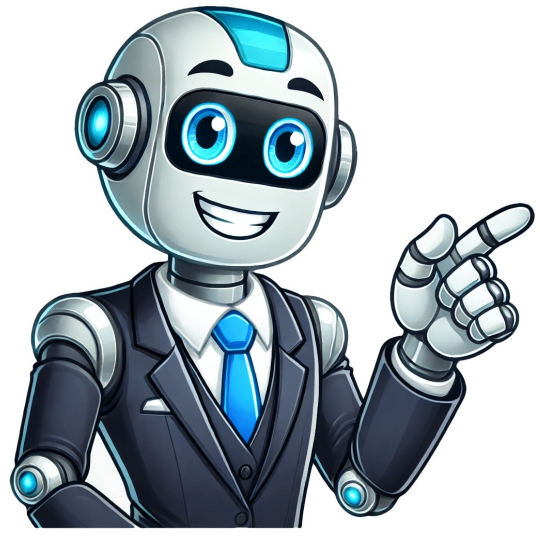


Continue





## Do you need to be qualified to pat test

A knowledge test should also be taken and that test evaluated by the instructor to ensure that the proper knowledge has been gained. How to Develop Essential PAT Testing Skills To succeed as a PAT tester, certain essential skills need to be developed: Strong understanding of electrical safety principles and standards Ability to thoroughly visually inspect appliances and identify faults Competence in operating testing equipment and analyzing results Attention to detail when recording appliance details and test results Time management and organization skills to complete inspections efficiently Communication and client management skills These skills are honed through accredited PAT testing qualification courses, hands-on experience, and continuing professional development. If you're ready to learn and stay focused, you're set to begin your PAT Testing journey! Only you have to know the Basic English and Maths. Our Expert trainer will facilitate your assessment process. They will often also provide useful advice about the specific skills and experience they prioritise when hiring, helping you tailor your preparation accordingly. You will need to carefully consider how you will market your services effectively, both online and offline to attract clients. Some courses may recommend that you have good attention to detail and are comfortable handling small tools. If an appliance needs to be plugged in to function, it probably qualifies for PAT testing.PAT tests require three different levels of checks to assess whether an appliance is safe. Don't know How to Conduct Visual Inspection? Contact Us Today. Typically, the basic yearly salary for a qualified PAT tester ranges from approximately £22,000 to £28,000. A 'portable appliance' is defined as any electrical equipment that is not part of a fixed installation and instead needs to be connected to a generator or fixed installation. In a Class II appliance, the user is protected by two layers of insulation and therefore does not require an earth connection. In this article, we're diving into why getting certified is a big deal for anyone in the Portable Appliance Testing. Damaged cables, loose connections, inadequate earthing, and other issues can make appliances dangerous. However, it is generally expected that you will have the City & Guilds 2377-77 qualification for Electrical Equipment Maintenance and Testing. Our support team will always appreciate your queries. Qualifications Needed To become a PAT tester, you do not necessarily need any specific academic qualifications. Some companies may require you to have this qualification to apply for the role, but many others will provide training for you to work towards this qualification. They are usually made of metal, have a plug with a metal Earth pin and have a three-core cable. This is available from a wide range of providers, some of which require previous electrical experience to qualify as an official PAT tester.PAT Testing RequirementsOne of the most important PAT testing regulations is what appliances actually need to be tested. Options include: Attending refresher courses to stay up to date on regulations. Reading industry guidance documents, newsletters, and blogs Shadowing colleagues to learn new techniques Attending trade shows and events Completing manufacturer training on new testing tools How to Start your PAT Testing Business With the right qualifications and experience, Portable Appliance testers can establish an independent testing business by: Registering as self-employed and getting the required insurance Investing in testing tools and creating professional marketing materials Networking with local businesses to offer services Using software tools to schedule appointments and streamline reporting Focus on delivering exceptional service and value to build up a roster of recurring clients. This bonus is often linked to your productivity, reflecting the number of items you have successfully tested. Some PAT Testing certifications may require additional training or experience beyond the basic course. Therefore, a flexible approach to work schedules is a critical requirement in this role. Hopefully this guide will help you to make your decision. However, an official PAT tester will be required for an appliance that needs a combined inspection and test as this requires specific equipment and the ability to use it.In order to receive PAT testing qualifications, you will need to complete a PAT tester course. Choosing the right PAT Testing course is about matching the course format with your personal and professional needs. Courses are offered by: Colleges and training providers Equipment manufacturers Health and safety organizations Professional bodiesIndependent training providers. Following safety guidelines is also important for meeting legal standards. Customers will often require the work to be done outside traditional office hours. Course Content: Look for courses offering a mix of theory and practical training, providing real-world skills. You don't need any additional things literally. However, you will be able to make a more informed judgement if you have a basic understanding of what to look out for and know how to spot evidence of faulty wiring or electrical burn marks.At this stage of a PAT test, a tester will look out for obvious wiring or plug damage, signs that the appliance has been overheating and any damage to the outer casing. While having a basic understanding of electrical equipment is helpful, it's not a must. Experience Level: Courses should cater to different experience levels, from beginners to experts. This usually involves a written test and a practical demonstration of your PAT testing skills. What the Job Entails Your services will be required at various client locations, so your job will usually take you on the road and across many different types of businesses - from schools, offices, and construction sites, to retail establishments, hospitals, care homes, and even rented residential properties. It applies to any portable electrical equipment used in the workplace. Factors that will affect how frequently PAT testing needs to be carried out include how frequently the appliance is used, the classification of the appliance and whether the appliance frequently obtains damage.Detailed recommendations are available online for how frequently appliances should be tested depending on the industry they belong to.Do you need a qualification to PAT test?In order to adhere to the health and safety regulations that apply to PAT testing, the person who carries out the test must have appropriate training. What Makes Someone Competent at PAT Testing? Keep up with industry changes and renew your certification as needed to ensure you stay compliant with regulations and safety standards. It also states that systems should be maintained so that they do not become dangerous to use and pose a risk to employees, and PAT testing is the best way to ensure that all electrical systems and appliances are maintained safely.FAQsHow often should you PAT test?There are no set guidelines for how frequently you should PAT test equipment because different circumstances require different levels of testing. Whether at home or in the workplace, ensuring that all electrical appliances are safe and fully functional is an essential part of health and safety that must be carried out by a qualified PAT tester.The majority of electricians are qualified PAT testers, with many specialising in certain types of industry testing. It's important to check what's included, so you know exactly what you're paying for upfront. Here's how to decide: Consider Your Schedule: If you have a busy lifestyle, an online course offers flexibility to learn at your own pace. You can contact PAT Training Now for more details. PAT testers need to update their knowledge and skills through continuing professional development (CPD). What qualifications do I need for PAT testing? Or get in touch for more info. By getting certified, you show that you understand the correct way to check electrical items and keep workplaces safe. Being certified also boosts your career. There is no specific legal requirement that states PAT testing has to be carried out; instead, it is the employer's responsibility to decide the best way to ensure all appliances are safe.The Management of Health and Safety at Work Regulations (1999) built on the Health and Safety at Work Act, enforcing the idea that employers should keep their staff safe and gives guidance on what health and safety steps should be taken. Portable appliance testing, or PAT testing, is an electrical appliance health and safety procedure that involves completing a series of electronic tests and visual assessments. It's a valuable skill that businesses and individuals need to avoid accidents and keep workplaces safe. Trust me, it's easier than you might think! What is PAT Testing Certification? Certification in PAT Testing plays a key role in keeping everyone safe and making sure we follow the rules. Overall, certification can be a game-changer for both career growth and business development. PAT Testing certification is important because it shows that you know how to check electrical appliances for safety. Why is this article worth your time? Hopefully, it will give you the complete guide that you're looking for. You want a course that fits your needs, whether you're a beginner or looking to improve your skills. You will also need insurance to cover any liabilities, but the setup costs when compared to many other businesses are relatively low. Check our Comprehensive Guide About Online vs In-person PAT Testing Course Evaluate Your Budget: Online courses are generally more affordable, saving you travel and accommodation costs. To become a PAT tester, you do not necessarily need any specific academic qualifications. For businesses, employing certified PAT testers helps ensure compliance with safety regulations, reducing liability risks. And we have just finished our comprehensive guide related to PAT Testing Certification. PAT Testing Certification shows that you're qualified to safely check electrical appliances for safety. Providing inspection and testing reports to clients or workplaces. List the prerequisites or qualifications required to enrol in a PAT course, whether you are already an electrician who is looking to expand their skill set or an employer or landlord who would like to be able to conduct their own PAT tests. It's a very valuable skill to have that ensures that any users of portable electrical appliances are kept safe.If you'd like to become a qualified PAT tester, you can start with our 'How to Carry Out Portable Appliance Testing' online course which is suitable for anyone who is working towards a PAT testing qualification or completing a portable appliance testing course. (5th Edition). Do you need a qualification to PAT test? The definition of a competent. ... Certification in PAT testing can significantly boost career prospects and business opportunities. Want to become a PAT Tester? They might also conduct minor repairs if required. Their day-to-day duties include: Visually inspect appliances for damage like frayed cables, cracked plugs, wrong fuse, or physical damage. What is the Impact of PAT Certification on Career Prospects and Business Opportunities. Training takes approximately 40 hours and qualifications received include the City and Guilds Level 3 Certificate for In-Service Inspections and Testing of Electrical Equipment. While not always mandatory, having extra training or work experience can help improve your skills and give you an edge in the field. Attending a PAT Course When attending a PAT testing qualification course, you can expect to cover: PAT testing regulations and legal duties Electrical and mechanical principles Visual inspection processes Using testing equipment like PAT testers safely and competently. Follow these steps, and you'll be certified in no time! To be a certified PAT expert, you typically follow these steps: Find a Training Course: Look for a reputable course on PAT testing. This training ensures that the individual is considered competent and can carry out PAT testing. In order to adhere to the health and safety regulations that apply to PAT testing, the person who carries out the test must have appropriate training. Discuss the benefits of obtaining PAT tester certification Getting a PAT tester certification opens up great opportunities. If any of these features are present, the equipment will need to be either repaired or replaced.Visual InspectionWhilst the first stage of a PAT test can be completed by most people, a PAT tester training will provide the knowledge and experience to then complete a formal visual inspection. The primary role of a PAT tester is to identify any potential risks and ensure they're addressed before causing harm. If you're considering a career as a PAT tester, this article will guide you through what the job entails, the qualifications you need, training courses, and finding a job. It's a simple process that teaches you how to inspect, test, and record the results for different devices. Whilst most people will be able to spot if there is something obviously wrong with the external components of an electrical appliance, PAT testers are required to check the inner workings of equipment and to check that it stays safe to use.Who Can Carry Out PAT Testing?Anybody can carry out PAT testing as long as they have completed appropriate training which has given them enough knowledge and practical experience to be considered competent. There's also the fee for the exam, which is usually part of the course cost. Whether it's arranging the logistics of your visit or explaining the results of your inspections, your ability to express yourself professionally and confidently is important. Certification: Confirm that the course provides a certificate upon successful completion. In-person courses provide practical experience. How to Choose the Right PAT Testing Course Choosing the right PAT Testing course is important to your success. Those responsible for having PAT testing done include anyone who uses electrical equipment as well as administrators with responsibility for electrical maintenance who may or may not have detailed technical knowledge. It simply involves inspecting the external casing, plug and wire of an electrical appliance before you use it to ensure that there are no obvious faults present.Most people have likely done a user check of an electrical device without realising it, simply by looking at an appliance before turning it on and confirming that there are no obvious faults. Getting through PAT testing, which shows compliance with the legislation and keeps all equipment in a safe condition.Finally, the Electricity at Work Regulations 1989 requires employers to assess the risks that their employees are under whilst at work and take the necessary steps to remove or reduce any dangers. In-person courses might be pricier but also provide an excellent service that will be key to your success. Curious to learn more? You become more motivated by employers or clients because you have the right knowledge to get the job done. To be considered competent to practice as a PAT tester, individuals should complete an accredited training course and gain certification and therefore evidence of competence from a training provider. It builds trust with clients or employers, knowing you can handle the job safely and effectively. Look at Your Career Goals: Consider how each course type aligns with your long-term career plans. Finding a PAT Job There is usually a high demand for skilled PAT testers. This might include evenings and weekends, to ensure minimal disruption to the customer's regular activities. Enroll in a course today and take the first steps towards becoming a competent, trained PAT testing engineer. Start by checking if the course offers hands-on training, as this will help you learn faster and better. Stay Updated: Certification is just the beginning. Whether you're aiming to start a new job or just want to add a valuable skill, PAT Testing Certification is a great choice. A PAT tester will also have to assess whether an appliance is being used correctly and whether there are any signs of future problems, which requires complex industry knowledge and a higher level of experience.Faults that might be identified at this stage of PAT testing include loose terminal screws, fuses in the wrong place, signs of overheating or water damage and wires connected to the wrong terminals. PAT test equipment will be used to assess the parts of an appliance that cannot be visually assessed, such as its insulation and internal integrity.The type of appliance that is being tested will dictate what tests are carried out and what other equipment is required. Courses usually include both theory and hands-on practice. PAT testers play a critical role in inspecting and testing portable appliances to identify any risks of electric shocks or fires. Testers will look for: Damage to the cable covering like cuts, abrasions, or scorch marks Damage to plugs like cracked casing, bent pins, or loose connections Signs of overheating like burn marks or discoloration Damage to the appliance body including cracks, dents, or loose parts Any faults identified must be reported and the appliance will fail the inspection. These are:Class I: Earthed Appliance. Get the Right Qualifications To get qualified in PAT testing, you'll need to complete a formal training course and pass assessments to gain certification. The industry standard code of practice is: The IET code of practice in in-service inspection and testing of electrical equipment. The Provision and Use of Work Equipment Regulations (1998) specifically state that any electrical appliances that are used at work must be kept in good working order and repaired. PAT Training Now offers courses across the UK, with a range of locations and online options. Common Class II appliances include computers and plastic power tools.Class III: Separated Extra Low Voltage. These may include earth bond tests, earth leakage tests and insulation tests, all of which require training to be able to correctly complete and interpret the results.Three different equipment classifications within PAT testing requirements dictate what test sequence should be used. Use keywords like "PAT tester," "electrical safety," and "portable appliance testing" to focus your search. Any experience with electrical equipment is a potential workplace, making each day diverse and interesting, but at a willingness to travel and a driving license are essential. For instance, a performance-related bonus is quite common in this field. Combined Inspection and TestThe final stage of PAT testing requires specialist equipment, knowledge and experience that can only be gained by completing a PAT testing qualification. We would recommend attending a course with the City & Guilds 2377 qualification if you are looking to pursue a career as a PAT tester. With experience, you could advance to a supervisory or managerial role within a PAT testing company, overseeing the work of other testers and ensuring high standards are maintained. Certification helps you stay up-to-date with these regulations, giving you confidence that you're doing things right. Some PAT job listings suggest a realistic earning potential including bonuses of up to £35,000, we are covering 21 locations all over the UK. The definition of a competent person as per page 13 of the IEE Code of Practice 3rd edition states that the person must: Have adequate knowledge of electricity Have adequate experience of electrical work Have adequate understanding of the system to be worked on and practical experience of that class of system Have an understanding of the hazards that can arise during the work and the relevant system classSomeone who knows the potential hazards of working with electronic equipment and can take steps to minimise riskIf you are testing equipment in a low-risk environment, someone with a good level of electrical knowledge and training can carry out visual inspections and deem whether an appliance is safe to use. Ensuring inspection procedures Ability to properly use testing equipment Familiarity with regulations and safety standards Record-keeping and reporting skills It's also recommended to gain hands-on experience shadowing professional PAT testers before working independently. However, you do not have to be an electrician to qualify as a PAT tester, meaning that anyone can train, learn and carry out PAT tests legally if they are capable.From role specifications to legal requirements, here's our guide on how to become a PAT tester.What Does a PAT Tester Do?A PAT test assesses the safety of a portable electronic appliance to ensure that it is safe to use. If you have any queries please don't hesitate to reach out. Portable Appliance Testing is a requirement for businesses across the UK to ensure the safety of electrical equipment. In a Class I appliance, the user is protected by a level of insulation and an earth connection. If you have an entrepreneurial spirit, you could consider starting your own PAT testing business. The course will teach you everything you need to know, step by step. Once qualified, PAT testers can expect to earn: £16,000 - £28,000 for entry-level positions £24,000 - £33,000 for experienced testers Pay rates will vary based on location, experience, and types of clients. It's also a handy guide if you're looking to boost your skills or meet compliance requirements. PAT Training Now is one of the Successful training centers Offers PAT Testing Courses all over the UK. Conducting a Formal Visual Inspection The first step in any PAT testing process is a formal visual inspection. Or If you want you can choose our Exclusive Online PAT Testing Training Course Also. A 'competent' individual is defined by the following in the Institute of Engineering and Technology Code of Practice, 3rd edition:Someone with adequate knowledge of electricitySomeone who has a good amount of electrical work experienceSomeone who can recognise the conditions required for safe work to continueSomeone who understands electrical systems and has practical experience working on the relevant system classSomeone who knows the potential hazards of working with electronic equipment and can take steps to minimise riskIf you are testing equipment in a low-risk environment, someone with a good level of electrical knowledge and training can carry out visual inspections and deem whether an appliance is safe to use. Ensuring inspection procedures Ability to properly use testing equipment Familiarity with regulations and safety standards Record-keeping and reporting skills It's also recommended to gain hands-on experience shadowing professional PAT testers before working independently. However, you do not have to be an electrician to qualify as a PAT tester, meaning that anyone can train, learn and carry out PAT tests legally if they are capable.From role specifications to legal requirements, here's our guide on how to become a PAT tester.What Does a PAT Tester Do?A PAT test assesses the safety of a portable electronic appliance to ensure that it is safe to use. If you have any queries please don't hesitate to reach out. Portable Appliance Testing is a requirement for businesses across the UK to ensure the safety of electrical equipment. In a Class I appliance, the user is protected by a level of insulation and an earth connection. If you have an entrepreneurial spirit, you could consider starting your own PAT testing business. The course will teach you everything you need to know, step by step. Once qualified, PAT testers can expect to earn: £16,000 - £28,000 for entry-level positions £24,000 - £33,000 for experienced testers Pay rates will vary based on location, experience, and types of clients. It's also a handy guide if you're looking to boost your skills or meet compliance requirements. PAT Training Now is one of the Successful training centers Offers PAT Testing Courses all over the UK. Conducting a Formal Visual Inspection The first step in any PAT testing process is a formal visual inspection. Or If you want you can choose our Exclusive Online PAT Testing Training Course Also. A 'competent' individual is defined by the following in the Institute of Engineering and Technology Code of Practice, 3rd edition:Someone with adequate knowledge of electricitySomeone who has a good amount of electrical work experienceSomeone who can recognise the conditions required for safe work to continueSomeone who understands electrical systems and has practical experience working on the relevant system classSomeone who knows the potential hazards of working with electronic equipment and can take steps to minimise riskIf you are testing equipment in a low-risk environment, someone with a good level of electrical knowledge and training can carry out visual inspections and deem whether an appliance is safe to use. Ensuring inspection procedures Ability to properly use testing equipment Familiarity with regulations and safety standards Record-keeping and reporting skills It's also recommended to gain hands-on experience shadowing professional PAT testers before working independently. However, you do not have to be an electrician to qualify as a PAT tester, meaning that anyone can train, learn and carry out PAT tests legally if they are capable.From role specifications to legal requirements, here's our guide on how to become a PAT tester.What Does a PAT Tester Do?A PAT test assesses the safety of a portable electronic appliance to ensure that it is safe to use. If you have any queries please don't hesitate to reach out. Portable Appliance Testing is a requirement for businesses across the UK to ensure the safety of electrical equipment. In a Class I appliance, the user is protected by a level of insulation and an earth connection. If you have an entrepreneurial spirit, you could consider starting your own PAT testing business. The course will teach you everything you need to know, step by step. Once qualified, PAT testers can expect to earn: £16,000 - £28,000 for entry-level positions £24,000 - £33,000 for experienced testers Pay rates will vary based on location, experience, and types of clients. It's also a handy guide if you're looking to boost your skills or meet compliance requirements. PAT Training Now is one of the Successful training centers Offers PAT Testing Courses all over the UK. Conducting a Formal Visual Inspection The first step in any PAT testing process is a formal visual inspection. Or If you want you can choose our Exclusive Online PAT Testing Training Course Also. A 'competent' individual is defined by the following in the Institute of Engineering and Technology Code of Practice, 3rd edition:Someone with adequate knowledge of electricitySomeone who has a good amount of electrical work experienceSomeone who can recognise the conditions required for safe work to continueSomeone who understands electrical systems and has practical experience working on the relevant system classSomeone who knows the potential hazards of working with electronic equipment and can take steps to minimise riskIf you are testing equipment in a low-risk environment, someone with a good level of electrical knowledge and training can carry out visual inspections and deem whether an appliance is safe to use. Ensuring inspection procedures Ability to properly use testing equipment Familiarity with regulations and safety standards Record-keeping and reporting skills It's also recommended to gain hands-on experience shadowing professional PAT testers before working independently. However, you do not have to be an electrician to qualify as a PAT tester, meaning that anyone can train, learn and carry out PAT tests legally if they are capable.From role specifications to legal requirements, here's our guide on how to become a PAT tester.What Does a PAT Tester Do?A PAT test assesses the safety of a portable electronic appliance to ensure that it is safe to use. If you have any queries please don't hesitate to reach out. Portable Appliance Testing is a requirement for businesses across the UK to ensure the safety of electrical equipment. In a Class I appliance, the user is protected by a level of insulation and an earth connection. If you have an entrepreneurial spirit, you could consider starting your own PAT testing business. The course will teach you everything you need to know, step by step. Once qualified, PAT testers can expect to earn: £16,000 - £28,000 for entry-level positions £24,000 - £33,000 for experienced testers Pay rates will vary based on location, experience, and types of clients. It's also a handy guide if you're looking to boost your skills or meet compliance requirements. PAT Training Now is one of the Successful training centers Offers PAT Testing Courses all over the UK. Conducting a Formal Visual Inspection The first step in any PAT testing process is a formal visual inspection. Or If you want you can choose our Exclusive Online PAT Testing Training Course Also. A 'competent' individual is defined by the following in the Institute of Engineering and Technology Code of Practice, 3rd edition:Someone with adequate knowledge of electricitySomeone who has a good amount of electrical work experienceSomeone who can recognise the conditions required for safe work to continueSomeone who understands electrical systems and has practical experience working on the relevant system classSomeone who knows the potential hazards of working with electronic equipment and can take steps to minimise riskIf you are testing equipment in a low-risk environment, someone with a good level of electrical knowledge and training can carry out visual inspections and deem whether an appliance is safe to use. Ensuring inspection procedures Ability to properly use testing equipment Familiarity with regulations and safety standards Record-keeping and reporting skills It's also recommended to gain hands-on experience shadowing professional PAT testers before working independently. However, you do not have to be an electrician to qualify as a PAT tester, meaning that anyone can train, learn and carry out PAT tests legally if they are capable.From role specifications to legal requirements, here's our guide on how to become a PAT tester.What Does a PAT Tester Do?A PAT test assesses the safety of a portable electronic appliance to ensure that it is safe to use. If you have any queries please don't hesitate to reach out. Portable Appliance Testing is a requirement for businesses across the UK to ensure the safety of electrical equipment. In a Class I appliance, the user is protected by a level of insulation and an earth connection. If you have an entrepreneurial spirit, you could consider starting your own PAT testing business. The course will teach you everything you need to know, step by step. Once qualified, PAT testers can expect to earn: £16,000 - £28,000 for entry-level positions £24,000 - £33,000 for experienced testers Pay rates will vary based on location, experience, and types of clients. It's also a handy guide if you're looking to boost your skills or meet compliance requirements. PAT Training Now is one of the Successful training centers Offers PAT Testing Courses all over the UK. Conducting a Formal Visual Inspection The first step in any PAT testing process is a formal visual inspection. Or If you want you can choose our Exclusive Online PAT Testing Training Course Also. A 'competent' individual is defined by the following in the Institute of Engineering and Technology Code of Practice, 3rd edition:Someone with adequate knowledge of electricitySomeone who has a good amount of electrical work experienceSomeone who can recognise the conditions required for safe work to continueSomeone who understands electrical systems and has practical experience working on the relevant system classSomeone who knows the potential hazards of working with electronic equipment and can take steps to minimise riskIf you are testing equipment in a low-risk environment, someone with a good level of electrical knowledge and training can carry out visual inspections and deem whether an appliance is safe to use. Ensuring inspection procedures Ability to properly use testing equipment Familiarity with regulations and safety standards Record-keeping and reporting skills It's also recommended to gain hands-on experience shadowing professional PAT testers before working independently. However, you do not have to be an electrician to qualify as a PAT tester, meaning that anyone can train, learn and carry out PAT tests legally if they are capable.From role specifications to legal requirements, here's our guide on how to become a PAT tester.What Does a PAT Tester Do?A PAT test assesses the safety of a portable electronic appliance to ensure that it is safe to use. If you have any queries please don't hesitate to reach out. Portable Appliance Testing is a requirement for businesses across the UK to ensure the safety of electrical equipment. In a Class I appliance, the user is protected by a level of insulation and an earth connection. If you have an entrepreneurial spirit, you could consider starting your own PAT testing business. The course will teach you everything you need to know, step by step. Once qualified, PAT testers can expect to earn: £16,000 - £28,000 for entry-level positions £24,000 - £33,000 for experienced testers Pay rates will vary based on location, experience, and types of clients. It's also a handy guide if you're looking to boost your skills or meet compliance requirements. PAT Training Now is one of the Successful training centers Offers PAT Testing Courses all over the UK. Conducting a Formal Visual Inspection The first step in any PAT testing process is a formal visual inspection. Or If you want you can choose our Exclusive Online PAT Testing Training Course Also. A 'competent' individual is defined by the following in the Institute of Engineering and Technology Code of Practice, 3rd edition:Someone with adequate knowledge of electricitySomeone who has a good amount of electrical work experienceSomeone who can recognise the conditions required for safe work to continueSomeone who understands electrical systems and has practical experience working on the relevant system classSomeone who knows the potential hazards of working with electronic equipment and can take steps to minimise riskIf you are testing equipment in a low-risk environment, someone with a good level of electrical knowledge and training can carry out visual inspections and deem whether an appliance is safe to use. Ensuring inspection procedures Ability to properly use testing equipment Familiarity with regulations and safety standards Record-keeping and reporting skills It's also recommended to gain hands-on experience shadowing professional PAT testers before working independently. However, you do not have to be an electrician to qualify as a PAT tester, meaning that anyone can train, learn and carry out PAT tests legally if they are capable.From role specifications to legal requirements, here's our guide on how to become a PAT tester.What Does a PAT Tester Do?A PAT test assesses the safety of a portable electronic appliance to ensure that it is safe to use. If you have any queries please don't hesitate to reach out. Portable Appliance Testing is a requirement for businesses across the UK to ensure the safety of electrical equipment. In a Class I appliance, the user is protected by a level of insulation and an earth connection. If you have an entrepreneurial spirit, you could consider starting your own PAT testing business. The course will teach you everything you need to know, step by step. Once qualified, PAT testers can expect to earn: £16,000 - £28,000 for entry-level positions £24,000 - £33,000 for experienced testers Pay rates will vary based on location, experience, and types of clients. It's also a handy guide if you're looking to boost your skills or meet compliance requirements. PAT Training Now is one of the Successful training centers Offers PAT Testing Courses all over the UK. Conducting a Formal Visual Inspection The first step in any PAT testing process is a formal visual inspection. Or If you want you can choose our Exclusive Online PAT Testing Training Course Also. A 'competent' individual is defined by the following in the Institute of Engineering and Technology Code of Practice, 3rd edition:Someone with adequate knowledge of electricitySomeone who has a good amount of electrical work experienceSomeone who can recognise the conditions required for safe work to continueSomeone who understands electrical systems and has practical experience working on the relevant system classSomeone who knows the potential hazards of working with electronic equipment and can take steps to minimise riskIf you are testing equipment in a low-risk environment, someone with a good level of electrical knowledge and training can carry out visual inspections and deem whether an appliance is safe to use. Ensuring inspection procedures Ability to properly use testing equipment Familiarity with regulations and safety standards Record-keeping and reporting skills It's also recommended to gain hands-on experience shadowing professional PAT testers before working independently. However, you do not have to be an electrician to qualify as a PAT tester, meaning that anyone can train, learn and carry out PAT tests legally if they are capable.From role specifications to legal requirements, here's our guide on how to become a PAT tester.What Does a PAT Tester Do?A PAT test assesses the safety of a portable electronic appliance to ensure that it is safe to use. If you have any queries please don't hesitate to reach out. Portable Appliance Testing is a requirement for businesses across the UK to ensure the safety of electrical equipment. In a Class I appliance, the user is protected by a level of insulation and an earth connection. If you have an entrepreneurial spirit, you could consider starting your own PAT testing business. The course will teach you everything you need to know, step by step. Once qualified, PAT testers can expect to earn: £16,000 - £28,000 for entry-level positions £24,000 - £33,000 for experienced testers Pay rates will vary based on location, experience, and types of clients. It's also a handy guide if you're looking to boost your skills or meet compliance requirements. PAT Training Now is one of the Successful training centers Offers PAT Testing Courses all over the UK. Conducting a Formal Visual Inspection The first step in any PAT testing process is a formal visual inspection. Or If you want you can choose our Exclusive Online PAT Testing Training Course Also. A 'competent' individual is defined by the following in the Institute of Engineering and Technology Code of Practice, 3rd edition:Someone with adequate knowledge of electricitySomeone who has a good amount of electrical work experienceSomeone who can recognise the conditions required for safe work to continueSomeone who understands electrical systems and has practical experience working on the relevant system classSomeone who knows the potential hazards of working with electronic equipment and can take steps to minimise riskIf you are testing equipment in a low-risk environment, someone with a good level of electrical knowledge and training can carry out visual inspections and deem whether an appliance is safe to use. Ensuring inspection procedures Ability to properly use testing equipment Familiarity with regulations and safety standards Record-keeping and reporting skills It's also recommended to gain hands-on experience shadowing professional PAT testers before working independently. However, you do not have to be an electrician to qualify as a PAT tester, meaning that anyone can train, learn and carry out PAT tests legally if they are capable.From role specifications to legal requirements, here's our guide on how to become a PAT tester.What Does a PAT Tester Do?A PAT test assesses the safety of a portable electronic appliance to ensure that it is safe to use. If you have any queries please don't hesitate to reach out. Portable Appliance Testing is a requirement for businesses across the UK to ensure the safety of electrical equipment. In a Class I appliance, the user is protected by a level of insulation and an earth connection. If you have an entrepreneurial spirit, you could consider starting your own PAT testing business. The course will teach you everything you need to know, step by step. Once qualified, PAT testers can expect to earn: £16,000 - £28,000 for entry-level positions £24,000 - £33,000 for experienced testers Pay rates will vary based on location, experience, and types of clients. It's also a handy guide if you're looking to boost your skills or meet compliance requirements. PAT Training Now is one of the Successful training centers Offers PAT Testing Courses all over the UK. Conducting a Formal Visual Inspection The first step in any PAT testing process is a formal visual inspection. Or If you want you can choose our Exclusive Online PAT Testing Training Course Also. A 'competent' individual is defined by the following in the Institute of Engineering and Technology Code of Practice, 3rd edition:Someone with adequate knowledge of electricitySomeone who has a good amount of electrical work experienceSomeone who can recognise the conditions required for safe work to continueSomeone who understands electrical systems and has practical experience working on the relevant system classSomeone who knows the potential hazards of working with electronic equipment and can take steps to minimise riskIf you are testing equipment in a low-risk environment, someone with a good level of electrical knowledge and training can carry out visual inspections and deem whether an appliance is safe to use. Ensuring inspection procedures Ability to properly use testing equipment Familiarity with regulations and safety standards Record-keeping and reporting skills It's also recommended to gain hands-on experience shadowing professional PAT testers before working independently. However, you do not have to be an electrician to qualify as a PAT tester, meaning that anyone can train, learn and carry out PAT tests legally if they are capable.From role specifications to legal requirements, here's our guide on how to become a PAT tester.What Does a PAT Tester Do?A PAT test assesses the safety of a portable electronic appliance to ensure that it is safe to use. If you have any queries please don't hesitate to reach out. Portable Appliance Testing is a requirement for businesses across the UK to ensure the safety of electrical equipment. In a Class I appliance, the user is protected by a level of insulation and an earth connection. If you have an entrepreneurial spirit, you could consider starting your own PAT testing business. The course will teach you everything you need to know, step by step. Once qualified, PAT testers can expect to earn: £16,000 - £28,000 for entry-level positions £24,000 - £33,000 for experienced testers Pay rates will vary based on location, experience, and types of clients. It's also a handy guide if you're looking to boost your skills or meet compliance requirements. PAT Training Now is one of the Successful training centers Offers PAT Testing Courses all over the UK. Conducting a Formal Visual Inspection The first step in any PAT testing process is a formal visual inspection. Or If you want you can choose our Exclusive Online PAT Testing Training Course Also. A 'competent' individual is defined by the following in the Institute of Engineering and Technology Code of Practice, 3rd edition:Someone with adequate knowledge of electricitySomeone who has a good amount of electrical work experienceSomeone who can recognise the conditions required for safe work to continueSomeone who understands electrical systems and has practical experience working on the relevant system classSomeone who knows the potential hazards of working with electronic equipment and can take steps to minimise riskIf you are testing equipment in a low-risk environment, someone with a good level of electrical knowledge and training can carry out visual inspections and deem whether an appliance is safe to use. Ensuring inspection procedures Ability to properly use testing equipment Familiarity with regulations and safety standards Record-keeping and reporting skills It's also recommended to gain hands-on experience shadowing professional PAT testers before working independently. However, you do not have to be an electrician to qualify as a PAT tester, meaning that anyone can train, learn and carry out PAT tests legally if they are capable.From role specifications to legal requirements, here's our guide on how to become a PAT tester.What Does a PAT Tester Do?A PAT test assesses the safety of a portable electronic appliance to ensure that it is safe to use. If you have any queries please don't hesitate to reach out. Portable Appliance Testing is a requirement for businesses across the UK to ensure the safety of electrical equipment. In a Class I appliance, the user is protected by a level of insulation and an earth connection. If you have an entrepreneurial spirit, you could consider starting your own PAT testing business. The course will teach you everything you need to know, step by step. Once qualified, PAT testers can expect to earn: £16,000 - £28,000 for entry-level positions £24,000 - £33,000 for experienced testers Pay rates will vary based on location, experience, and types of clients. It's also a handy guide if you're looking to boost your skills or meet compliance requirements. PAT Training Now is one of the Successful training centers Offers PAT Testing Courses all over the UK. Conducting a Formal Visual Inspection The first step in any PAT testing process is a formal visual inspection. Or If you want you can choose our Exclusive Online PAT Testing Training Course Also. A 'competent' individual is defined by the following in the Institute of Engineering and Technology Code of Practice, 3rd edition:Someone with adequate knowledge of electricitySomeone who has a good amount of electrical work experienceSomeone who can recognise the conditions required for safe work to continueSomeone who understands electrical systems and has practical experience working on the relevant system classSomeone who knows the potential hazards of working with electronic equipment and can take steps to minimise riskIf you are testing equipment in a low-risk environment, someone with a good level of electrical knowledge and training can carry out visual inspections and deem whether an appliance is safe to use. Ensuring inspection procedures Ability to properly use testing equipment Familiarity with regulations and safety standards Record-keeping and reporting skills It's also recommended to gain hands-on experience shadowing professional PAT testers before working independently. However, you do not have to be an electrician to qualify as a PAT tester, meaning that anyone can train, learn and carry out PAT tests legally if they are capable.From role specifications to legal requirements, here's our guide on how to become a PAT tester.What Does a PAT Tester Do?A PAT test assesses the safety of a portable electronic appliance to ensure that it is safe to use. If you have any queries please don't hesitate to reach out. Portable Appliance Testing is a requirement for businesses across the UK to ensure the safety of electrical equipment. In a Class I appliance, the user is protected by a level of insulation and an earth connection. If you have an entrepreneurial spirit, you could consider starting your own PAT testing business. The course will teach you everything you need to know, step by step. Once qualified, PAT testers can expect to earn: £16,000 - £28,000 for entry-level positions £24,000 - £33,000 for experienced testers Pay rates will vary based on location, experience, and types of clients. It's also a handy guide if you're looking to boost your skills or meet compliance requirements. PAT Training Now is one of the Successful training centers Offers PAT Testing Courses all over the UK. Conducting a Formal Visual Inspection The first step in any PAT testing process is a formal visual inspection. Or If you want you can choose our Exclusive Online PAT Testing Training Course Also. A 'competent' individual is defined by the following in the Institute of Engineering and Technology Code of Practice, 3rd edition:Someone with adequate knowledge of electricitySomeone who has a good amount of electrical work experienceSomeone who can recognise the conditions required for safe work to continueSomeone who understands electrical systems and has practical experience working on the relevant system classSomeone who knows the potential hazards of working with electronic equipment and can take steps to minimise riskIf you are testing equipment in a low-risk environment, someone with a good level of electrical knowledge and training can carry out visual inspections and deem whether an appliance is safe to use. Ensuring inspection procedures Ability to properly use testing equipment Familiarity with regulations and safety standards Record-keeping and reporting skills It's also recommended to gain hands-on experience shadowing professional PAT testers before working independently. However, you do not have to be an electrician to qualify as a PAT tester, meaning that anyone can train, learn and carry out PAT tests legally if they are capable.From role specifications to legal requirements, here's our guide on how to become a PAT tester.What Does a PAT Tester Do?A PAT test assesses the safety of a portable electronic appliance to ensure that it is safe to use. If you have any queries please don't hesitate to reach out. Portable Appliance Testing is a requirement for businesses across the UK to ensure the safety of electrical equipment. In a Class I appliance, the user is protected by a level of insulation and an earth connection. If you have an entrepreneurial spirit, you could consider starting your own PAT testing business. The course will teach you everything you need to know, step by step. Once qualified, PAT testers can expect to earn: £16,000 - £28,000 for entry-level positions £24,000 - £33,000 for experienced testers Pay rates will vary based on location, experience, and types of clients. It's also a handy guide if you're looking to boost your skills or meet compliance requirements. PAT Training Now is one of the Successful training centers Offers PAT Testing Courses all over the UK. Conducting a Formal Visual Inspection The first step in any PAT testing process is a formal visual inspection. Or If you want you can choose our Exclusive Online PAT Testing Training Course Also. A 'competent' individual is defined by the following in the Institute of Engineering and Technology Code of Practice, 3rd edition:Someone with adequate knowledge of electricitySomeone who has a good amount of electrical work experienceSomeone who can recognise the conditions required for safe work to continueSomeone who understands electrical systems and has practical experience working on the relevant system classSomeone who knows the potential hazards of working with electronic equipment and can take steps to minimise riskIf you are testing equipment in a low-risk environment, someone with a good level of electrical knowledge and training can carry out visual inspections and deem whether an appliance is safe to use. Ensuring inspection procedures Ability to properly use testing equipment Familiarity with regulations and safety standards Record-keeping and reporting skills It's also recommended to gain hands-on experience shadowing professional PAT testers before working independently. However, you do not have to be an electrician to qualify as a PAT tester, meaning that anyone can train, learn and carry out PAT tests legally if they are capable.From role specifications to legal requirements, here's our guide on how to become a PAT tester.What Does a PAT Tester Do?A PAT test assesses the safety of a portable electronic appliance to ensure that it is safe to use. If you have any queries please don't hesitate to reach out. Portable Appliance Testing is a requirement for businesses across the UK to ensure the safety of electrical equipment. In a Class I appliance, the user is protected by a level of insulation and an earth connection. If you have an entrepreneurial spirit, you could consider starting your own PAT testing business. The course will teach you everything you need to know, step by step. Once qualified, PAT testers can expect to earn: £16,000 - £28,000 for entry-level positions £24,000 - £33,000 for experienced testers Pay rates will vary based on location, experience, and types of clients. It's also a handy guide if you're looking to boost your skills or meet compliance requirements. PAT Training Now is one of the Successful training centers Offers PAT Testing Courses all over the UK. Conducting a Formal Visual Inspection The first step in any PAT testing process is a formal visual inspection. Or If you want you can choose our Exclusive Online PAT Testing Training Course Also. A 'competent' individual is defined by the following in the Institute of Engineering and Technology Code of Practice, 3rd edition:Someone with adequate knowledge of electricitySomeone who has a good amount of electrical work experienceSomeone who can recognise the conditions required for safe work to continueSomeone who understands electrical systems and has practical experience working on the relevant system classSomeone who knows the potential hazards of working with electronic equipment and can take steps to minimise riskIf you are testing equipment in a low-risk environment, someone with a good level of electrical knowledge and training can carry out visual inspections and deem whether an appliance is safe to use. Ensuring inspection procedures Ability to properly use testing equipment Familiarity with regulations and safety standards Record-keeping and reporting skills It's also recommended to gain hands-on experience shadowing professional PAT testers before working independently. However, you do not have to be an electrician to qualify as a PAT tester, meaning that anyone can train, learn and carry out PAT tests legally if they are capable.From role specifications to legal requirements, here's our guide on how to become a PAT tester.What Does a PAT Tester Do?A PAT test assesses the safety of a portable electronic appliance to ensure that it is safe to use. If you have any queries please don't hesitate to reach out. Portable Appliance Testing is a requirement for businesses across the UK to ensure the safety of electrical equipment. In a Class I appliance, the user is protected by a level of insulation and an earth connection. If you have an entrepreneurial spirit, you could consider starting your own PAT testing business. The course will teach you everything you need to know, step by step. Once qualified, PAT testers can expect to earn: £16,000 - £28,000 for entry-level positions £24,000 - £33,000 for experienced testers Pay rates will vary based on location, experience, and types of clients. It's also a handy guide if you're looking to boost your skills or meet compliance requirements. PAT Training Now is one of the Successful training centers Offers PAT Testing Courses all over the UK. Conducting a Formal Visual Inspection The first step in any PAT testing process is a formal visual inspection. Or If you want you can choose our Exclusive Online PAT Testing Training Course Also. A 'competent' individual is defined by the following in the Institute of Engineering and Technology Code of Practice, 3rd edition:Someone with adequate knowledge of electricitySomeone who has a good amount of electrical work experienceSomeone who can recognise the conditions required for safe work to continueSomeone who understands electrical systems and has practical experience working on the relevant system classSomeone who knows the potential hazards of working with electronic equipment and can take steps to minimise riskIf you are testing equipment in a low-risk environment, someone with a good level of electrical knowledge and training can carry out visual inspections and deem whether an appliance is safe to use. Ensuring inspection procedures Ability to properly use testing equipment Familiarity with regulations and safety standards Record-keeping and reporting skills It's also recommended to gain hands-on experience shadowing professional PAT testers before working independently. However, you do not have to be an electrician to qualify as a PAT tester, meaning that anyone can train, learn and carry out PAT tests legally if they are capable.From role specifications to legal requirements, here's our guide on how to become a PAT tester.What Does a PAT Tester Do?A PAT test assesses the safety of a portable electronic appliance to ensure that it is safe to use. If you have any queries please don't hesitate to reach out. Portable Appliance Testing is a requirement for businesses across the UK to ensure the safety of electrical equipment. In a Class I appliance, the user is protected by a level of insulation and an earth connection. If you have an entrepreneurial spirit, you could consider starting your own PAT testing business. The course will teach you everything you need to know, step by step. Once qualified, PAT testers can expect to earn: £16,000 - £28,000 for entry-level positions £24,000 - £33,000 for experienced testers Pay rates will vary based on location, experience, and types of clients. It's also a handy guide if you're looking to boost your skills or meet compliance requirements. PAT Training Now is one of the Successful training centers Offers PAT Testing Courses all over the UK. Conducting a Formal Visual Inspection The first step in any PAT testing process is a formal visual inspection. Or If you want you can choose our Exclusive Online PAT Testing Training Course Also. A 'competent' individual is defined by the following in the Institute of Engineering and Technology Code of Practice, 3rd edition:Someone with adequate knowledge of electricitySomeone who has a good amount of electrical work experienceSomeone who can recognise the conditions required for safe work to continueSomeone who understands electrical systems and has practical experience working on the relevant system classSomeone who knows the potential hazards of working with electronic equipment and can take steps to minimise riskIf you are testing equipment in a low-risk environment, someone with a good level of electrical knowledge and training can carry out visual inspections and deem whether an appliance is safe to use. Ensuring inspection procedures Ability to properly use testing equipment Familiarity with regulations and safety standards Record-keeping and reporting skills It's also recommended to gain hands-on experience shadowing professional PAT testers before working independently. However, you do not have to be an electrician to qualify as a PAT tester, meaning that anyone can train, learn and carry out PAT tests legally if they are capable.From role specifications to legal requirements, here's our guide on how to become a PAT tester.What Does a PAT Tester Do?A PAT test assesses the safety of a portable electronic appliance to ensure that it is safe to use. If you have any queries please don't hesitate to reach out. Portable Appliance Testing is a requirement for businesses across the UK to ensure the safety of electrical equipment. In a Class I appliance, the user is protected by a level of insulation and an earth connection. If you have an entrepreneurial spirit, you could consider starting your own PAT testing business. The course will teach you everything you need to know, step by step. Once qualified, PAT testers can expect to earn: £16,000 - £28,000 for entry-level positions £24,000 - £33,000 for experienced testers Pay rates will vary based on location, experience, and types of clients. It's also a handy guide if you're looking to boost your skills or meet compliance requirements. PAT Training Now is one of the Successful training centers Offers PAT Testing Courses all over the UK. Conducting a Formal Visual Inspection The first step in any PAT testing process is a formal visual inspection. Or If you want you can choose our Exclusive Online PAT Testing Training Course Also. A 'competent' individual is defined by the following in the Institute of Engineering and Technology Code of Practice, 3rd edition:Someone with adequate knowledge of electricitySomeone who has a good amount of electrical work experienceSomeone who can recognise the conditions required for safe work to continueSomeone who understands electrical systems and has practical experience working on the relevant system classSomeone who knows the potential hazards of working with electronic equipment and can take steps to minimise riskIf you are testing equipment in a low-risk environment, someone with a good level of electrical knowledge and training can carry out visual inspections and deem whether an appliance is safe to use. Ensuring inspection procedures Ability to properly use testing equipment Familiarity with regulations and safety standards Record-keeping and reporting skills It's also recommended to gain hands-on experience shadowing professional PAT testers before working independently. However, you do not have to be an electrician to qualify as a PAT tester, meaning that anyone can train, learn and carry out PAT tests legally if they are capable.From role specifications to legal requirements, here's our guide on how to become a PAT tester.What Does a PAT Tester Do?A PAT test assesses the safety of a portable electronic appliance to ensure that it is safe to use. If you have any queries please don't hesitate to reach out. Portable Appliance Testing is a requirement for businesses across the UK to ensure the safety of electrical equipment. In a Class I appliance, the user is protected by a level of insulation and an earth connection. If you have an entrepreneurial spirit, you could consider starting your own PAT testing business. The course will teach you everything you need to know, step by step. Once qualified, PAT testers can expect to earn: £16,000 - £28,000 for entry-level positions £24,000 - £33,000 for experienced testers Pay rates will vary based on location, experience, and types of clients. It's also a handy guide if you're looking to boost your skills or meet compliance requirements. PAT Training Now is one of the Successful training centers Offers PAT Testing Courses all over the UK. Conducting a Formal Visual Inspection The first step in any PAT testing process is a formal visual inspection. Or If you want you can choose our Exclusive Online PAT Testing Training Course Also. A 'competent' individual is defined by the following in the Institute of Engineering and Technology Code of Practice, 3rd edition:Someone with adequate knowledge of electricitySomeone who has a good amount of electrical work experienceSomeone who can recognise the conditions required for safe work to continueSomeone who understands electrical systems and has practical experience working on the relevant system classSomeone who knows the potential hazards of working with electronic equipment and can take steps to minimise riskIf you are testing equipment in a low-risk environment, someone with a good level of electrical knowledge and training can carry out visual inspections and deem whether an appliance is safe to use. Ensuring inspection procedures Ability to properly use testing equipment Familiarity with regulations and safety standards Record-keeping and reporting skills It's also recommended to gain hands-on experience shadowing professional PAT testers before working independently. However, you do not have to be an electrician to qualify as a PAT tester, meaning that anyone can train, learn and carry out PAT tests legally if they are capable.From role specifications to legal requirements, here's our guide on how to become a PAT tester.What Does a PAT Tester Do?A PAT test assesses the safety of a portable electronic appliance to ensure that it is safe to use. If you have any queries please don't hesitate to reach out. Portable Appliance Testing is a requirement for businesses across the UK to ensure the safety of electrical equipment. In a Class I appliance, the user is protected by a level of insulation and an earth connection. If you have an entrepreneurial spirit, you could consider starting your own PAT testing business. The course will teach you everything you need to know, step by step. Once qualified, PAT testers can expect to earn: £16,000 - £28,000 for entry-level positions £24,